



Tel: 01132 505449

[www.westfieldinfants.co.uk](http://www.westfieldinfants.co.uk)

Email: [head@westfieldinfants.co.uk](mailto:head@westfieldinfants.co.uk)



## NEWSLETTER 7 - 08<sup>TH</sup> NOVEMBER 2023

### REMINDER – TRAINING DAYS

Friday 17<sup>th</sup> November 2023 – School closed to all pupils

Monday 20<sup>th</sup> November – Nursery and Reception closed to pupils, Year 1 and 2 children to attend as normal.

### ACHIEVEMENT AWARDS



**Headteacher Tea Party 27/10/2023**

Congratulations to the children who went to the Headteacher's Tea Party on Friday.

More photographs are available on the website

<https://www.westfieldinfants.co.uk/page/achievements/63794>

### PARENT VOICE - FRIDAY 10<sup>TH</sup> NOVEMBER



Parent Voice takes place on **Friday 10<sup>th</sup> November at 8.50am** in the staff room with Ms Lowry, Mrs Fryer and Mrs Middleton. Parent Voice is your opportunity to talk about general school life and how you view it. We also like to ask for your opinion on certain topics. If you have specific concerns about your child, please see the class teacher.

All parents/carers are welcome, so come along for a coffee or tea and biscuits, and let us know your views, ask questions and help us work together.

## **ANTI-BULLYING WEEK**



Next week is Anti-Bullying week and we are asking all children to come to school wearing odd socks on Monday 13<sup>th</sup> November to celebrate what makes us unique. The children will be taking part in lots of activities throughout the week. There is some information for parents and carers from the Antibullying Alliance and Kidscape attached with this Newsletter.

## **INFORMATION WE HOLD ABOUT YOUR CHILD**

Please help us keep our records up to date by informing us of any changes to the following information about your child:-

- Address
- Emergency contact Information including names and telephone numbers
- Child's registered doctor and medical practice
- Email address for first contact (this is where the weekly newsletter will be sent)
- Medical conditions and allergies
- Arrangements for collecting your child from school

Please email any changes to [admin@westfieldinfants.co.uk](mailto:admin@westfieldinfants.co.uk)

## **CHILDREN IN NEED – THURSDAY 16<sup>TH</sup> NOVEMBER**

Children in Need is on Friday 17<sup>th</sup> November. As this is a training day and school is closed, children can come to school dressed in dots and spots on Thursday 16<sup>th</sup> November. Please donate £1 to children in Need in cash or via School Spider.



## **FLU VACCINATIONS – THURSDAY 16<sup>TH</sup> NOVEMBER**

Flu vaccinations for Reception, Year 1 and Year 2 children will take place in school on 16th November. If you haven't done so already, please click on the link below to give consent by 12th November.

<https://www.leedsimmunisations.co.uk/Forms/Flu>

The code for Yeadon Westfield Infant School is: EE107859

## **CHRISTMAS FAIR – WEDNESDAY 29<sup>TH</sup> NOVEMBER @ 3.10PM**



We are asking for the following donations for the Christmas Fair; items for the general tombola stall, items for the chocolate tombola stall. Please drop these at the office as soon as possible. We will also be asking for buns and cakes to be brought in on the day for our cake sale. There will be a Santa's Grotto (you will be able to book a visit nearer the time), a drinks stall, Christmas gift stall, children's Christmas craft packs for sale and various other fun and exciting activities.

## **PARENT QUESTIONNAIRE**

In the summer term, many of you responded to our request to complete a parent questionnaire. I would like to thank you for this.

During parents' evenings next week, school would like to take the opportunity to follow up on your responses by asking you to complete a questionnaire for this term. This gives our new parents an opportunity to express their views.

We are pleased to report that many of the responses were incredibly positive and that parents are happy with provision in school. Obviously, there is always room for improvement, and we are proactive in looking for ways to ensure that the children have the best education possible. We hope parents feel that they are listened to. We do address all issues where possible. We have included areas mentioned in more than one response.

### **Areas of strength**

How well new children settle, home school communication, support with medical needs and personal care, school visits, support from staff, quality of learning, personal development, Sports Day, collaboration between staff and parents to support individual children, adapting to meet children's needs, Stars after school club, school performances, shared learning, nurture, progress, transition to Juniors.

### **Areas to improve**

**Shared Learning:** We are mindful that not all parents can attend our Shared Learning sessions and that the children can find this upsetting. With this in mind, we have moved these sessions to 3.10. Reception will start their sessions later in the year.

**Tapestry:** During Covid Tapestry was used across the school as a means of communication. Moving forward Tapestry will only be used in Nursery and Reception. Nursery and Reception parents have been informed as to how this will work.

**After school clubs:** We are aware that our after-school clubs focus on sport. We are always on the look out for other providers but so far, they have been unsuitable for our age group or too expensive. We will keep looking.

**Fundraising:** Sharon Telford has offered to help with this, and she has lots of great ideas. She will be looking for parental help as the year progresses.

**Behaviour Rewards:** We have a positive approach to behaviour across the school and use the Star Awards, the Tea Party, the Recognition Board and Positive Notes to demonstrate that we recognise good behaviour. The advice from professionals is to keep your reward system simple so that our young children are clear about expectations. In some classes teachers also use an additional system that works for their group.

**Phonics and Numeracy sessions:** It has been great to see parents at these sessions. Information from the sessions is uploaded to the website.

**School visits:** We try to ensure that each year group has a school visit, and we would like more but unfortunately cost does impact how many we can do.

**Uniform:** We try to balance the number of non-uniform days across the year as they can have an impact (not always good) on learning. We appreciate that the white t shirt can get discoloured quickly and that not everyone likes the red, however we are hesitant to change colours as this would have a cost impact on parents. Please remember rather than buying new uniform, we do have good quality second-hand clothes in school.

Thank you again for taking the time to respond and we look forward to working together this year.

## **HEAD LICE**



As you may be aware head lice are an all too common occurrence in all schools. Unfortunately we have a recurring problem in certain parts of school. The only way we can keep control of this is for ALL parents to be diligent in checking and treating any infestation.

If your child should catch head lice please follow the procedure set out below. We would also advise that you check your child's hair once a week whether you think they are infected or not. If we could all do it on a Wednesday night this may help.

- Check the hair of every family member.
- Look for head lice and nits (which are white empty egg shells).
- Use a fine tooth comb- combs are available from the office.
- Hair washing – after washing hair, use a little conditioner on the hair, section the hair and comb through the hair from the scalp to the end of the hair, a section at a time, with a fine tooth comb.
- This combing procedure is suggested for everyone in the household – head lice do not distinguish between children and adults.
- **Continue to check hair every week- this is key to ensuring that they don't come back**
- If you need help or advice in dealing with head lice, please contact your local clinic, Health Centre, your GP or chemist.
- To help stop the spread of head lice please let school and close contacts know if you discover eggs or lice.

Thank you for your co-operation.

## **LEEDS CITY COUNCIL BENEFITS TEAM**

If you need advice about applying for benefits you can contact Leeds City Council's Welfare and Benefits Team on 0113 376 0452. There is also a useful tool to check you are receiving the correct support on the following website: <https://www.entitledto.co.uk/>,

## **REMINDERS**

### **BAG 2 SCHOOL & WINTER COAT APPEAL**

Please remember the deadline for dropping off bags is 9am on Friday morning. We are also collecting for the winter coat appeal so please send coats in a separate bag.

## **CHILDREN STARTING NURSERY, RECEPTION & YEAR 3 IN SEPTEMBER 2024**

The remaining Open Days for children due to start Nursery or Reception in September 2024 will be on the following days:-

- Wednesday 15th November 2023: Tours at 9.30am and 10am
- Tuesday 5<sup>th</sup> December 2023: Tours at 9.30am and 10am
- Wednesday 10<sup>th</sup> January 2024: Tours at 9.30am and 10am

To book a tour please complete the form at this link: <https://forms.office.com/e/Edz4C3aiNg>.

**If your child is currently in Year 2 and you would like to look around Yeadon Westfield Junior School they will be open at the same times. Please contact them on 0113 2503395 for more details.**

Applications for Reception and Year 3 places open on 1 November 2023. The deadline to apply is 15 January 2024. Please remember that although your child is guaranteed a place at Yeadon Westfield Junior School, you still have to submit an application. There is more information about how to apply on Leeds City Council website <https://www.leeds.gov.uk/schools-and-education/school-admissions/apply-for-a-primary-school>.

## **GOVERNOR NEWS**

### **GOVERNOR PROFILE – KIRSTY HOLMES**

I have been teaching at Westfield Infants since 2013. I have taught in Year 1, Nursery and am currently the Reception teacher and PE Coordinator. I am also a Staff Governor. I have had this role since September 2014.

I enjoy my role as a governor as I get to keep up to date with any changes or new plans that may be implemented in school. The responsibilities of a governor are to understand policies and data and be able to ask questions and challenge decisions made, ensuring that the interests of children, parents and staff are at the forefront of all decisions made.

Being a governor is a motivating and diverse role. I feel that it benefits me as a teacher as I have a deeper understanding of the way in which a school is run.



## **USEFUL WEBSITE LINKS**

Keep up to date with school news and blogs by downloading the School Spider parents app and selecting Yeadon Westfield Infant School. To receive instant messages and use the payment facility you will need to log in.



## **SECOND HAND UNIFORM AND THE WESTFIELD PANTRY**

Parents and carers at Westfield Infants have access to our stock of second hand uniform and food parcels from The Westfield Pantry. To find out more information, please follow the links below:-

- [The Westfield Pantry](#)
- [Second Hand Uniform](#)

## **PUPIL PREMIUM AND FREE SCHOOL MEALS**

If you're on benefits and your child is entitled to universal infant free school meals anyway or brings a packed lunch, it's still important to register for a free school meal to ensure school doesn't miss out on funding called pupil premium. Find out more information on our [school website](#).

## **EASY FUNDRAISING**

Please support Yeadon Westfield Infant School at [Easy Fundraising](#) when doing your everyday shopping.



## **STARS BEFORE AND AFTER SCHOOL CLUB NEWS**

As it is Remembrance Day soon, the children have been cutting out poppies and creating some wonderful pictures. We talked about the meaning of the different coloured poppies.

STARS Before and After School Club is open to children in Nursery, Reception, Year 1 & 2 and siblings at the Junior school. To find out more information about opening times and prices, please visit the [STARS page](#) on our website.



## **DATES FOR YOUR DIARY**

DAY	DATE	TIME	EVENT
Friday	10/11/2023	9.00am	Bag 2 School
Monday	13/11/2023	8.50am-10.00am	Chat and Play - for parents and carers with pre school age children. (Date change)
Monday	13/11/2023	All day	Children to wear odd socks to school for the launch of Anti-Bullying week
Monday	13/11/2023	5.00pm-7.00pm	Parent Consultation Appointments – representatives from MindMate will be present.
Tuesday	14/11/2023	5.00pm-7.00pm	Parent Consultation Appointments
Wednesday	15/11/2023	9.30am-10.30am	Open Day for children starting Reception in September.
Wednesday	15/11/2023	9.30am-10.30am	Open Day at the Junior School for parents of Year 2 children moving there in September.
Thursday	16/11/2023	All day	Children in Need – children to come to school wearing dots and spots – donation £1

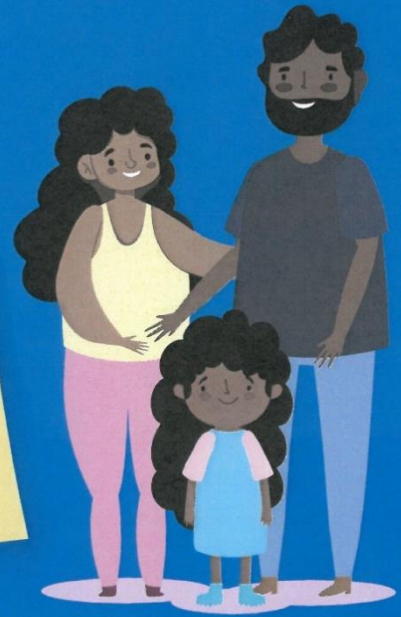
Thursday	16/11/2023	All Day	Flu Vaccinations for Reception, Year 1 and Year 2 children who have consent
<b>Friday</b>	<b>17/11/2023</b>	<b>All day</b>	<b>Training Day – School Closed to pupils</b>
<b>Monday</b>	<b>20/11/2023</b>	<b>All day</b>	<b>Training Day – Nursery and Reception classes closed. Year 1 and 2 children to attend as normal</b>
Tuesday	21/11/2023	1.30pm-2.30pm	Northern Dreaming Storytime Tour for Reception and Nursery (in school)
<b>Wednesday</b>	<b>29/11/2023</b>	<b>8.50am-10.00am</b>	<b>Chat and Play - for parents and carers with pre school age children. (Date change)</b>
Wednesday	29/11/2023	3.10pm-4.30pm	Christmas Fair – more details to follow soon.
Monday	04/12/2023	12.00pm-3.10pm	Year 1 and 2 Visit to Leeds Playhouse to see The Enormous Crocodile.
Tuesday	05/12/2023	9.30am-10.30am	Open Day for children starting Reception in September.
Tuesday	05/12/2023	9.30am-10.30am	Open Day at the Junior School for parents of Year 2 children moving there in September.
Tuesday	05/12/2023	2.00pm-2.50pm	Codwollop Theatre Group Christmas performance for Nursery and Reception (in school)
<b>Monday</b>	<b>11/12/2023</b>	<b>8.50am-10.00am</b>	<b>Chat and Play - for parents and carers with pre school age children. (Date change)</b>
Tuesday	12/12/2023	8.50am-10.00am	Year 1 and 2 Christmas Performance – more details to follow
Wednesday	13/12/2023	8.50am-10.00am	Year 1 and 2 Christmas Performance – more details to follow
Thursday	14/12/2023	12.00pm	Christmas Dinner
Tuesday	19/12/2023	8.50am-9.30am	Reception Christmas Performance – more details to follow
Wednesday	20/12/2023	8.50am-10.00am	Chat and Play - for parents and carers with pre school age children.
Wednesday	20/12/2023	11.30am-12.00pm & 2.40pm-3.10pm	Nursery Christmas Sing a-long
Thursday	21/12/2023	9.00am-10.30am	Whole School visit to St John's Church – more details to follow
Thursday	21/12/2023	PM	Christmas Discos – more details to follow
<b>Friday</b>	<b>22/12/2023</b>	<b>3.10pm</b>	<b>School closes for the Christmas Holiday</b>
<b>Monday</b>	<b>08/01/2024</b>	<b>8.40am</b>	<b>School opens for the Spring Term</b>

## **COMMUNICATIONS SINCE LAST NEWSLETTER**

<b>EMAILS:</b>	25/10/2023 – Reminder – Flu Vaccinations (Rec, Yr1&2) 27/10/2023 – International Space Station Role Play (Yr1&2) 27/10/2023 – Christmas Card Orders 27/10/2023 – Reception Baseline Results 27/10/2023 – Harvest Assembly 06/11/2023 – British Legion Poppy Appeal 06/11/2023 – PE in Year 2 – Autumn Term 2 06/11/2023 – After School Dodgeball & Multiskills (Rec, Yr1&2) 07/11/2023 – Strep A Information 08/11/2023 – Headlice (Nursery/Reception/Year 2 Blue)
<b>SENT HOME VIA CLASS:</b>	-
<b>COLLECTING:</b>	Batteries for recycling
<b>WEBSITE UPDATES:</b>	<a href="#">Achievements</a> , Class blogs, Halloween Colouring Competition, <a href="#">Applying for a primary place FAQs</a>



# Is your child due to start primary school in 2024?



Applications are open for Reception places to start in **September**

You can apply online until **15 January 2024**

Before you apply, find out more at [www.leeds.gov.uk/apply](http://www.leeds.gov.uk/apply)

- Learn about the admissions process
- Research schools so you can list your 5 preferences
- Read each school's admissions policy
- Understand where your child might be offered a place
- Check if your home address gives you priority

 Call us on  
0113 222 4414

Watch our quick  
guide to school  
admissions

