

## NEWSLETTER 34 - 19<sup>TH</sup> JUNE 2024

### ACHIEVEMENT AWARDS



**Rocket Awards 17/06/2024**



**Headteacher Tea Party 14/06/2024**



**Lunchtime Stars 17/06/2024**



**Reading Stars 17/06/2024**



**Handwriting Stars 17/06/2024**

Congratulations to the children who went to the Headteacher's Tea Party on Friday and those who received an award in assembly on Monday . More photographs are available on the [website](#).

## **SCIENCE SHARE WEEK**

The children have been investigating how glass and water change the appearance of things.



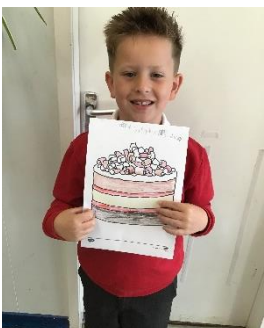
More photographs are available on the [school website](#).

## **SPEAK UP!**

The Speak Up questionnaire at the link below is an opportunity for you to bring to our attention any aspect of school life for your child (such as friendship issues, worries about school work, concerns about lunches etc.) that we can help with. Depending on the nature of issues raised, it may be Mrs Fryer, your child's class teacher or Ms Lowry who deals with the concern.

<https://forms.office.com/e/WSS0G85tK8>

## **STARS BEFORE AND AFTER SCHOOL CLUB NEWS**



The children have been enjoying the Euros and have created some fantastic pictures to celebrate.

**STARS Before and After School Club** is open to children in Nursery, Reception, Year 1 & 2 and siblings at the Junior school. To find out more information about opening times and prices, please visit the [STARS page](#) on our website. There is no registration fee. To arrange a visit to STARS, please contact the school office on 0113 2505449.

## **USEFUL WEBSITE LINKS**

Keep up to date with school news and blogs by downloading the School Spider parents app and selecting Yeadon Westfield Infant School. To receive instant messages and use the payment facility you will need to log in.



## **SECOND HAND UNIFORM AND THE WESTFIELD PANTRY**

Parents and carers at Westfield Infants have access to our stock of second hand uniform and food parcels from The Westfield Pantry. To find out more information, please follow the links below:-

- [The Westfield Pantry](#)
- [Second Hand Uniform](#)

## **PUPIL PREMIUM AND FREE SCHOOL MEALS**

If you're on benefits and your child is entitled to universal infant free school meals anyway or brings a packed lunch, it's still important to register for a free school meal to ensure school doesn't miss out on funding called pupil premium. Find out more information on our [school website](#).

## **EASY FUNDRAISING**

Please support Yeadon Westfield Infant School at [Easy Fundraising](#) when doing your everyday shopping.



## **NURSERY PLACES SEPTEMBER 2024**

If your child was born between 1st September 2020 and 31st August 2021 and you would like to register for them to start our nursery in September 2024, please contact Mrs Middleton at [sbm@westfieldinfants.co.uk](mailto:sbm@westfieldinfants.co.uk). You can also call in and pick up a form from the school office.

## **BOOK BOXES**

We have book boxes on the walls outside the classrooms for the children to use. Please encourage your child to take a book when you drop them off or pick them up from school.



## **COMMUNICATIONS SINCE LAST NEWSLETTER**

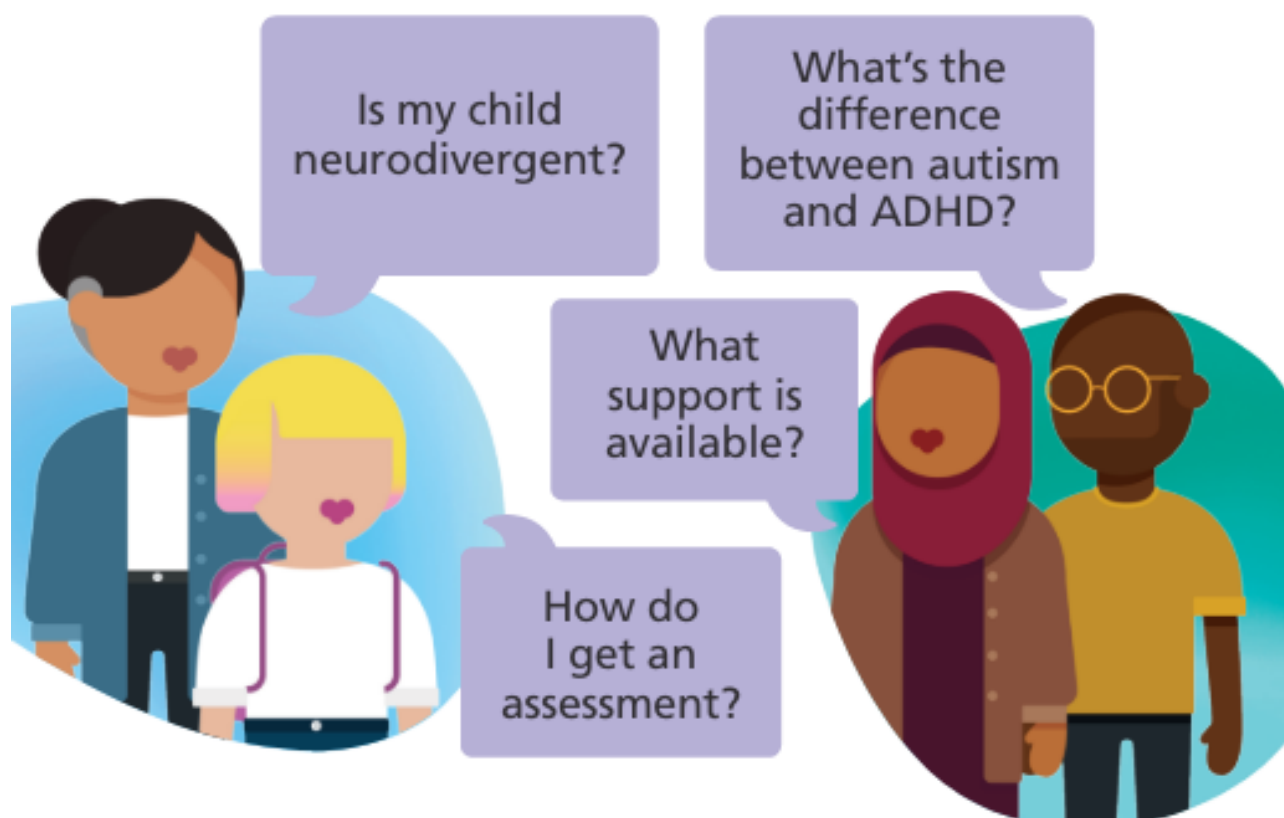
<b>EMAILS:</b>	13/06/2024 Spring Fair and Raffle Prizes 13/06/2024 Year 2 Transition Day Lunch 14/06/2024 Leeds SEND Event 14/06/2024 Year 2 Leavers T-Shirt 18/06/2024 Classes for September 2024 19/06/2024 Proposed afterschool clubs for September 2024
<b>COLLECTING:</b>	Recycling for junk modelling
<b>WEBSITE UPDATES:</b>	<a href="#">Achievements</a> , <a href="#">Science Week</a>

## **DATES FOR YOUR DIARY**

<b>DAY</b>	<b>DATE</b>	<b>TIME</b>	<b>EVENT</b>
Wednesday	19/06/2024	7.00pm – 8.00pm	New Parents Evening for children starting Reception in September
Tuesday	25/06/2024	2.00pm – 3.00pm	Stay and Play for new Reception children
<b>Wednesday</b>	<b>26/06/2024</b>	<b>All day</b>	<b>Nursery closed for an Open Day for children starting in September</b>

Wednesday	26/06/2024	All – day	Year 2 Transition Day to Junior School
Friday	28/06/2024	All day	Reception visit to Hesketh Farm
Tuesday	02/07/2024	6.00pm – 7.00pm	Transition Meeting for parents with children moving to Year 1 in September
Wednesday	03/07/2024	2.00pm – 3.00pm	Stay and Play for new Reception children
Friday	05/07/2024	All day	Rockpool Experience in School – Year 1 and Year 2
W/C	08/07/2024		Healthy Living Week
Monday	08/07/2024	1.10pm – 3.00pm	Sports Day
Wednesday	10/07/2024	1.10pm – 3.00pm	Reserve Sports Day incase of bad weather on Monday
Thursday	11/07/2024	All Day	Olympic Day – more details to follow
Friday	12/07/2024	1.10pm – 3.00pm	End of year discos – more details to follow
<b>Saturday</b>	<b>13/07/2024</b>	<b>11.00am – 4.00pm</b>	<b>Yeadon Carnival – more details to follow</b>
Thursday	18/07/2024	9.00am – 10.00am	Year 2 Leavers Assembly
<b>Friday</b>	<b>19/07/2024</b>	<b>3.05pm</b>	<b>Last day of term for children Nursery, Reception &amp; Year 1 to be picked up 5 minutes early. Year 2 to be cheered out through the office at 3.10pm</b>
Monday	22/07/2024		TRAINING DAY - SCHOOL CLOSED TO PUPILS
Tuesday	23/07/2024		TRAINING DAY – SCHOOL CLOSED TO PUPILS
Monday	02/09/2024		TRAINING DAY – SCHOOL CLOSED TO PUPILS
Tuesday	03/09/2024		School opens for Year 1 and Year 2 Pupils
Friday	06/09/2024		First Day for Reception children – staggered start times.
Monday	09/09/2024		Reception to start fulltime
W/C	09/09/2024		Nursery children to start settling in sessions

# Questions about neurodiversity?



## **MindMate ND Hub**

A one-stop support resource for neurodivergent children, young people and their families and carers in Leeds.

**[mindmate.org.uk/nd](https://mindmate.org.uk/nd)**



# LEARN TO CYCLE IN SUMMER 2024!

## INTENSIVE "LEARN TO RIDE A BIKE" SESSIONS RUNNING IN JULY & AUGUST!

IS YOUR YOUR CHILD A PRO ON A BALANCE BIKE AND READY TO TAKE THE NEXT STEP TOWARDS RIDING THEIR PEDAL BIKE?

IF YES, THEN OUR INTENSIVE LEARN TO CYCLE SESSIONS ARE FOR YOU!

OUR INTENSIVE SUMMER COURSES WILL RUN ON THE FOLLOWING DATES DURING THE SUMMER HOLIDAYS



THURS 25TH JULY, TUES 30TH JULY,  
THURS 1ST AUG, TUES 6TH AUG,  
THURS 8TH AUG

MORE DATES TO BE RELEASED!

LEVEL 1 - LEARN TO BALANCE

10AM - 12PM

LEVEL 2 - LEARN TO PEDAL

12.30PM - 2.30PM



LIMITED PLACES AVAILABLE, PRE BOOKING IS ESSENTIAL!

SCAN THE QR CODES TO BOOK

OR EMAIL US AT [HOLIDAYCLUB@INGEARCOACHING.CO.UK](mailto:holidayclub@ingearcoaching.co.uk)

FOR FURTHER DETAILS!



( A MINIMUM MINIMUM OF TWO SESSIONS ARE REQUIRED TO BOOK, BUT WE ADVISE 3/4 TO BE PEDALLING CONFIDENTLY & SAFELY )